



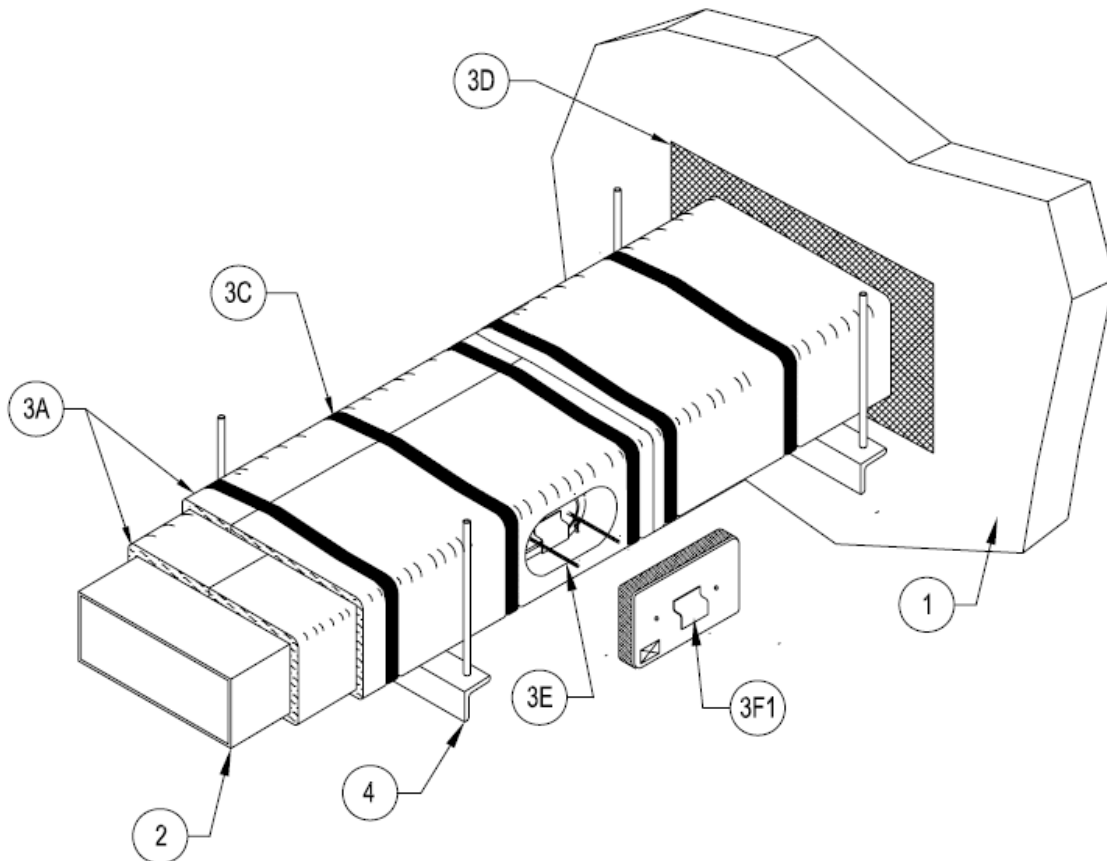
Grease Duct Assemblies

Assembly No. HNKT G-18

Assembly Rating 2-HR

May 10, 2011

Classified in accordance with ICBO Evaluation Services, Inc. Acceptance Criteria for Grease Duct Enclosure Systems, dated April 2001 as an alternate to 2 Hr fire resistance rated shaft enclosures with a minimum zero clearance to combustibles. Also Classified in accordance with the requirements of ASTM E 2336-04, "Standard Test Methods For Fire Resistive Grease Duct Enclosures".



1. **Floor or Wall Assembly** — Min 4-1/2 in. thick reinforced lightweight or normal weight (100 - 150 pcf) concrete floor or min 4-3/4 in. thick reinforced lightweight or normal weight concrete wall. Wall may also be constructed of any UL Classified Concrete Blocks. See **Concrete Blocks (CAZT)** category in Fire Resistance Directory for names of manufacturers.

2. **Steel Grease Duct** — Min 16 gauge (0.059 in.) thick steel duct having dimensions of 24 in. high and 48 in. wide.

2A. **Steel Grease Duct** — As an alternate to steel grease duct (Item 2), round steel ducts, min 16 gauge (0.059 in.) thick steel duct having dimensions of max 36 in. diameter.

3. **Fire Resistive System** — The fire resistive system shall consist of the following:



A. **Batts and Blankets*** — Nom 1-1/2 thick blanket totally encapsulated within foil-scrim facers. The steel duct shall be wrapped with two layers of duct wrap installed with tightly-butt joints at all transverse and longitudinal joints and with joints offset between the inside and outside layer by a min of 6 in. (152 mm) in accordance with the manufacturer's installation instructions. All cut edges and ends shall be sealed with 3 in. (76 mm) wide pressure sensitive aluminum foil tape.

THERMAL CERAMICS INC — FireMaster® Fast Wrap XL or FireMaster FastWrap+ or Pyroscat Duct Wrap XL

B. **Collars** — Fabricated from Batts and Blankets* - (Optional, Not Shown) - Nom 1-1/2 thick, 6 in. wide blanket totally encapsulated within foil-scrim facers. The transverse butt joints on the second layer shall be wrapped using a collar. The butt joint shall be located nom 3 in. from the edge of the collar. The collar shall be installed with 3 in. longitudinal overlaps. All cut edges and ends shall be sealed with 3 in. wide pressure sensitive aluminum foil tape.

THERMAL CERAMICS INC — FireMaster® Fast Wrap XL or Pyroscat Duct Wrap XL

C. **Steel Banding Straps** — Min 1/2 in. wide by 0.015 in. thick carbon steel or stainless steel banding straps used in conjunction with min 1 in. long stainless steel crimp clips. Banding straps spaced a max 12 in. O.C. and 1-1/2 in. from transverse joints of duct wrap.

D. **Firestop System** — When the grease duct passes through a fire rated wall or floor assembly, the through openings shall be firestopped in accordance with Systems No. C-AJ-7018, C-AJ-7119 or C-AJ-7098.

E. **Duct Access Door - Hood and Duct Assemblies#** - (Optional, Not Shown) Installed per manufacturers' installation instructions.

DUCTMATE INDUSTRIES INC — F2 Access Door, Ultimate Access Door[#]

COMPONENT HARDWARE GROUP INC — Hi-Temp Access Door

THERMAL CERAMICS INC — FireMaster DuctDoor[#]

F. **Duct Access Door Insulation** — (Optional, Not Shown) Fabricated from Batts and Blankets* - Nom 1-1/2 (38 mm) thick blanket totally encapsulated within foil-scrim facers, installed in three layers with minimum 1 in. (25 mm) overlaps on each layer and a 16 gage cover plate installed to protect outside layer in accordance with the manufacturer's installation instructions. Assembly is attached to duct on minimum two 3/8 in. (10 mm) threaded rods welded to the duct access door (3E).

THERMAL CERAMICS INC — FireMaster Fast Wrap XL, FireMaster Fast Wrap+ or Pyroscat Duct Wrap XL.

F1. **Duct Access Door Insulation*** — Assembled insulation cover plate installed in accordance with the manufacturer's installation instructions.



THERMAL CERAMICS INC — FireMaster FastDoor XL or Pyroscat FastDoor XL

4. **Hanger System** — (Not shown) - No additional protection is required for hanger systems providing that a min 3/8 in (10mm). diameter threaded steel hanger rod is used in conjunction with min 2 in. by 2 in. by 1/8 in. (51 by 51 by 3 mm) angle with steel drop in or wedge expansion type masonry anchors.

*Bearing the UL Classification Mark.

#Bearing the UL Listing Mark

Reprinted from the Online Certifications Directory with permission from Underwriters Laboratories Inc. Copyright © 2011 Underwriters Laboratories Inc.®